



FLU CLINICS

Our flu clinics are open for bookings now and will start on Saturday 19th September. We will be immunising the eligible patient groups as follows:

- ◆ Patients aged 65 years and over.
- ◆ Children aged 2-3 years old. (Please see overleaf for information and dates for these clinics.)
- ◆ Patients under 65 years old and at clinical risk. This includes patients with the following conditions:
 - All pregnant women.
 - Chronic heart disease such as heart failure.
 - Chronic kidney disease at stage three, four or five.
 - Chronic neurological disease such as Parkinson's disease, motor neurone disease, or a learning disability.
 - Chronic (long-term) respiratory disease such as severe asthma, chronic obstructive pulmonary disease or bronchitis.
 - Diabetes.
 - Splenic dysfunction or asplenia.
 - Weakened immune system due to disease or treatment.

Please be aware that patients with asthma are only entitled to a free NHS flu vaccination if they have been prescribed a preventer inhaler.

Clinic dates, times and locations are as follows:

The Swan Surgery		
Saturday 19th September	08:00am - 11:00am	NOW FULL!!
Saturday 26th September	08:00am - 11:00am	
Saturday 3rd October	08:00am - 11:00am	

Liphook Village Surgery		
Saturday 19th September	08:00am - 11:00am	NOW FULL!!

Invitation Letters

We are currently sending out letter invitations to ALL patients who are eligible. The letter has a strip at the bottom of the page containing a barcode. Please tear off this strip and bring it with you.

YOU MUST BRING YOUR SLIP WITH YOU TO YOUR APPOINTMENT.

We will not be able to give you your vaccination if you do not have this with you.

How do I book into a clinic?

The best way to book into one of our clinics is by going to our website: www.swanmedicalgroup.co.uk

If you do not have access to our website, please call us on 01730 264011. We expect our phone lines will be busy at this time, so please avoid ringing at peak times.

Flu Clinics for Children aged 2-3

We will be giving children aged 2 to 3 years the usual Nasal flu immunisation. When you receive your letter telling you to book your child in, please call us on 01730 264011. We can book you into one of the clinic dates listed below.

Please ensure you have your letter prior to booking and with you at the appointment.

When arriving for the appointment, the child must be accompanied by **ONE** adult who must be wearing a mask. You will arrive as normal at the main entrance to the surgery and reception will direct you to the appropriate area. Please arrive as close to your appointment time as possible.

Clinicians will be wearing appropriate PPE and will be washing hands between patients.

We expect all patients to adhere to the two metre social distancing guidelines when attending the surgery.

The Swan Surgery	
Thursday 8th October	14:00 - 17:00
Friday 9th October	14:00 - 16:00
Monday 13th October	09:00 - 11.30

Liphook Village Surgery	
Wednesday 30th September	14:00 - 17:00
Monday 5th October	14:00 - 17:00
Wednesday 14th October	14:00 - 17:00

Shielding Patients

For patients who have been advised that due to COVID-19 they need to shield up until 1st August, we have created a separate Flu Clinic on the 15th October 2020 and letters have been sent inviting you to this clinic. Alternatively you are welcome to book into any of our usual clinics.

What do I need when attending the appointment?

When attending a flu clinic appointment please ensure you:

- Arrive as close to your appointment time as possible with your flu invite letter
- Wear a face mask and come alone to the appointment where possible.
- Wear appropriate clothing to the appointment which provides easy access to your arm. Typically given in the left arm.
- **DO NOT COME TO THE APPOINTMENT IF YOU HAVE ANY COVID-19 SYMPTOMS.**

What should I expect when coming to the Flu Clinics?

Upon arrival at Swan or Liphook Surgery you will be shown to one of two queues.

You will follow your queue as shown in the floor plans of each site below.

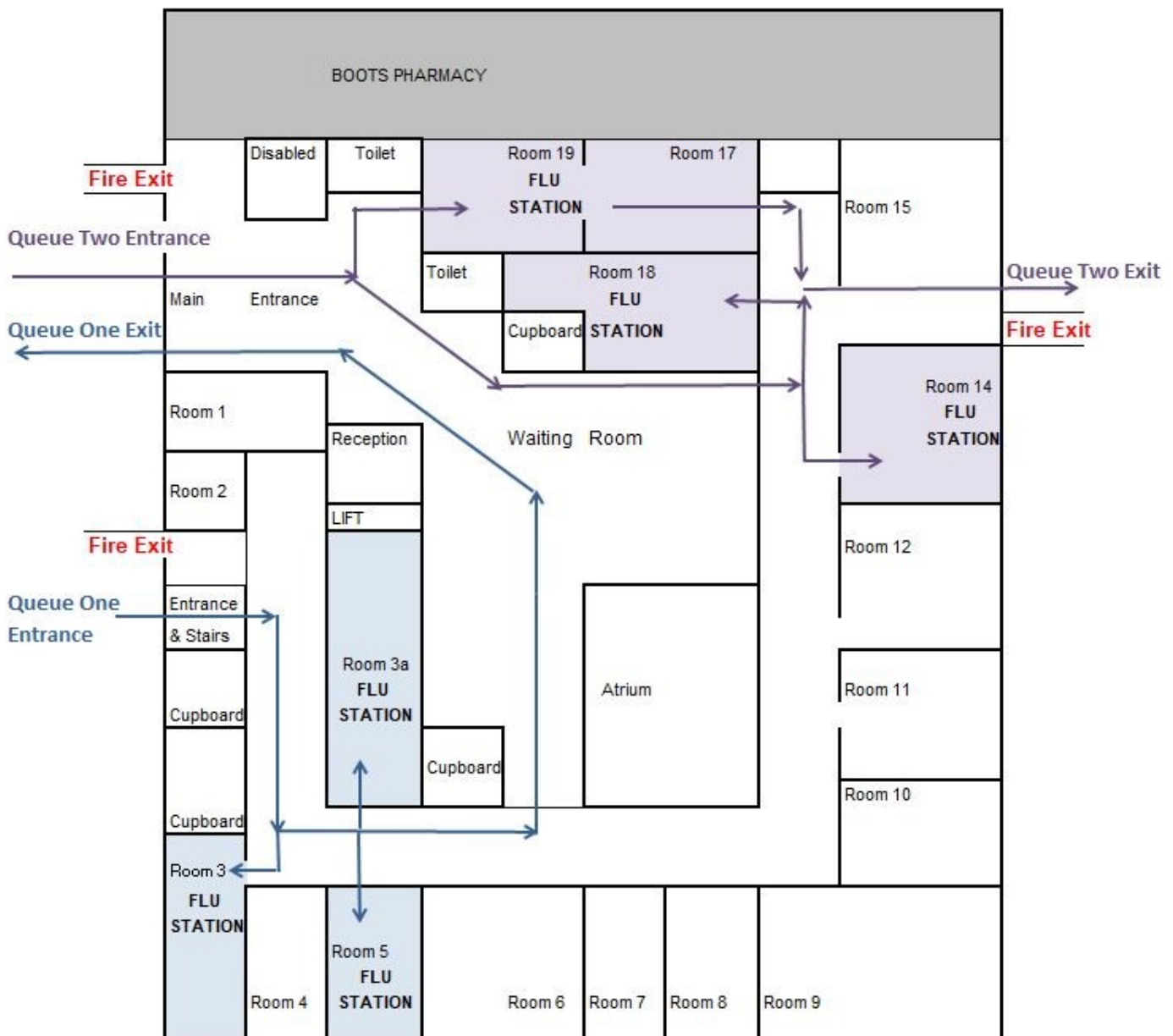
We will be operating a strict **ONE WAY** system around the surgery and there will be marshalls to guide you in the right direction.

You **MUST** follow social distancing guidelines and stay two metres apart.

A clinician will be in based at each flu station and will be wearing scrubs/uniform, a mask and suitable PPE. They will be washing hands between each patient.

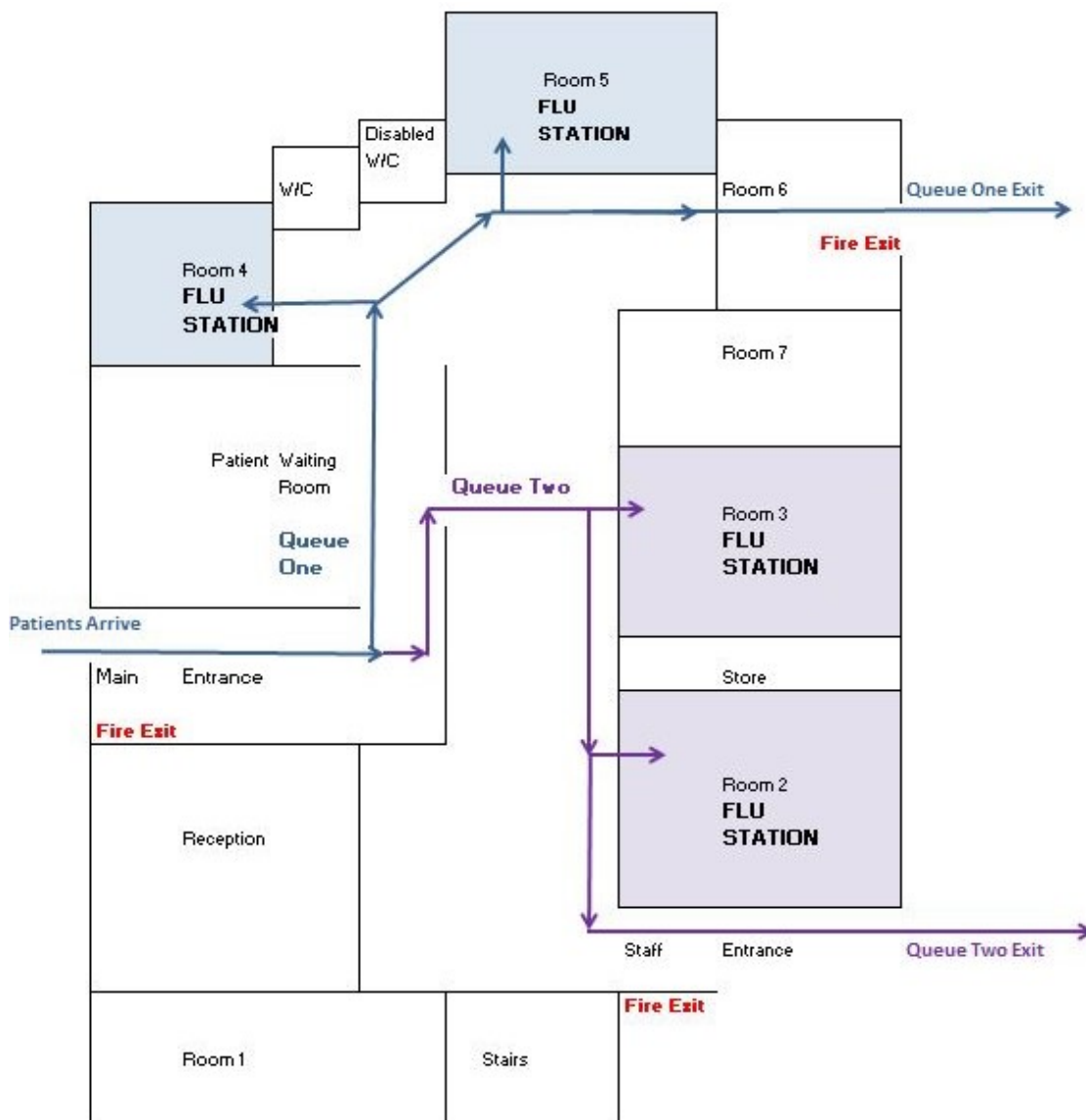
After your flu vaccine you will be shown the correct direction of travel to exit the surgery.

SWAN SURGERY CLINIC GUIDE:



*****Please note the patient car park at Swan Surgery will be closed on the morning of the clinics *****

LIPHOOK VILLAGE SURGERY CLINIC GUIDE:



What about patients between 50 and 64 years of age?

As you may be aware, we have been asked to immunise an additional cohort this year, those aged between 50 and 64 as well as the usual household members of (formerly) shielded patients. The government will be giving us the go ahead to do so and we are expecting this to be around November time, dependent on the availability of additional vaccine supplies. We will of course keep you updated on when these will be available. The national demand is expected to increase from 15.1million to 28.7 million doses this year. We will be following government guidelines to ensure our most vulnerable patient groups are immunised first.

For all updates and more information, go to our website: www.swanmedicalgroup.co.uk or head over to our social media pages.



@SMGgps



@swanGPs



@swanmedicalgroup